

HYDRAULIC AND PNEUMATIC

PJ 1000 High Pressure



MODEL	MEDIA				PRESSURE (MAX.)		TEMPERATURE (MAX.)		SPEED (MAX.) RPM:
	STEAM	AIR	OIL	WATER	BAR	PSI	°C	°F	
PJ1000	●	●	●	●	280	4,061	120	240	600RPM

● Recommended ● Not recommended

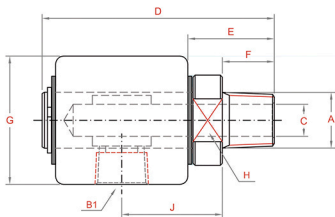
1. Consult Pomier joints for specific details.

2. For specific application parameters, see catalog page. Consult Pomier joints for applications requiring increased speeds and pressures.

3. Do not operate rotary joint at maximum pressure, temperature and speed simultaneously.

Model PJ1000 Family with Dual Passage

Model	A Thread	B1 Thread	B2 Thread	K Thread
PJ1016	3/4" NPT	3/4"	1/4"	1/4"
PJ1017	3/4" BSP	3/4"	1/4"	1/4"



Model	A Thread	B1 Thread	C	D	E	F	G	H	J
PJ1001	1/4" BSP	1/4" NPT	08	58	22	13	32	22	38
	1/4" NPT								
PJ1002	3/8" BSP	1/4" NPT							
	3/8" NPT								
PJ1003	1/2" BSP	1/2" NPT	12	117	40	19	68	32	56
	1/2" NPT								
PJ1004	3/4" BSP	3/4" NPT	19	117	40	19	68	32	56
	3/4" NPT								
PJ1005	1" BSP	1" NPT	24	98	34	20	77	32	44
	1" NPT								

DIMENSIONAL SHEET